

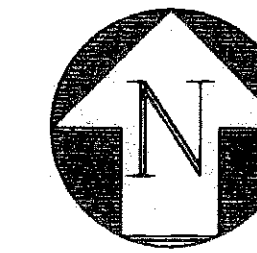
MEDITERRANEA PHASE 1

BEING A REPLAT OF A PORTION OF THE PLAT OF WOODS EDGE AS RECORDED IN PLAT BOOK 50, PAGES 130-131 AND LYING IN THE SOUTH HALF OF THE NORTHEAST QUARTER OF SECTION 25, TOWNSHIP 42 SOUTH, RANGE 42 EAST, PALM BEACH COUNTY, FLORIDA
CITY OF RIVIERA BEACH, PALM BEACH COUNTY, FLORIDA

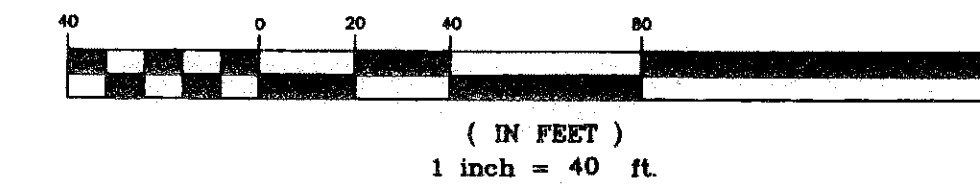
SHEET 3 OF 3
SEPTEMBER 2006

70

MATCHLINE TO SHEET 2

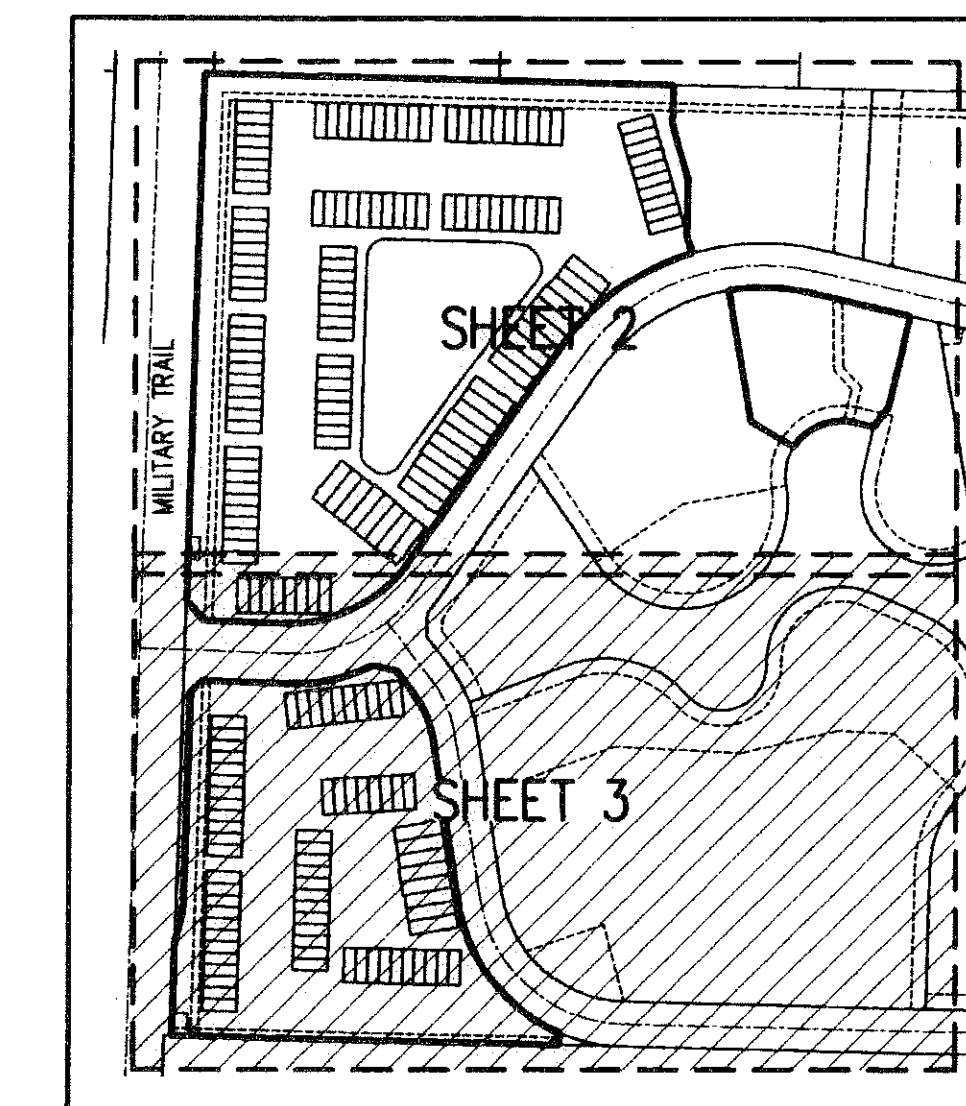


GRAPHIC SCALE

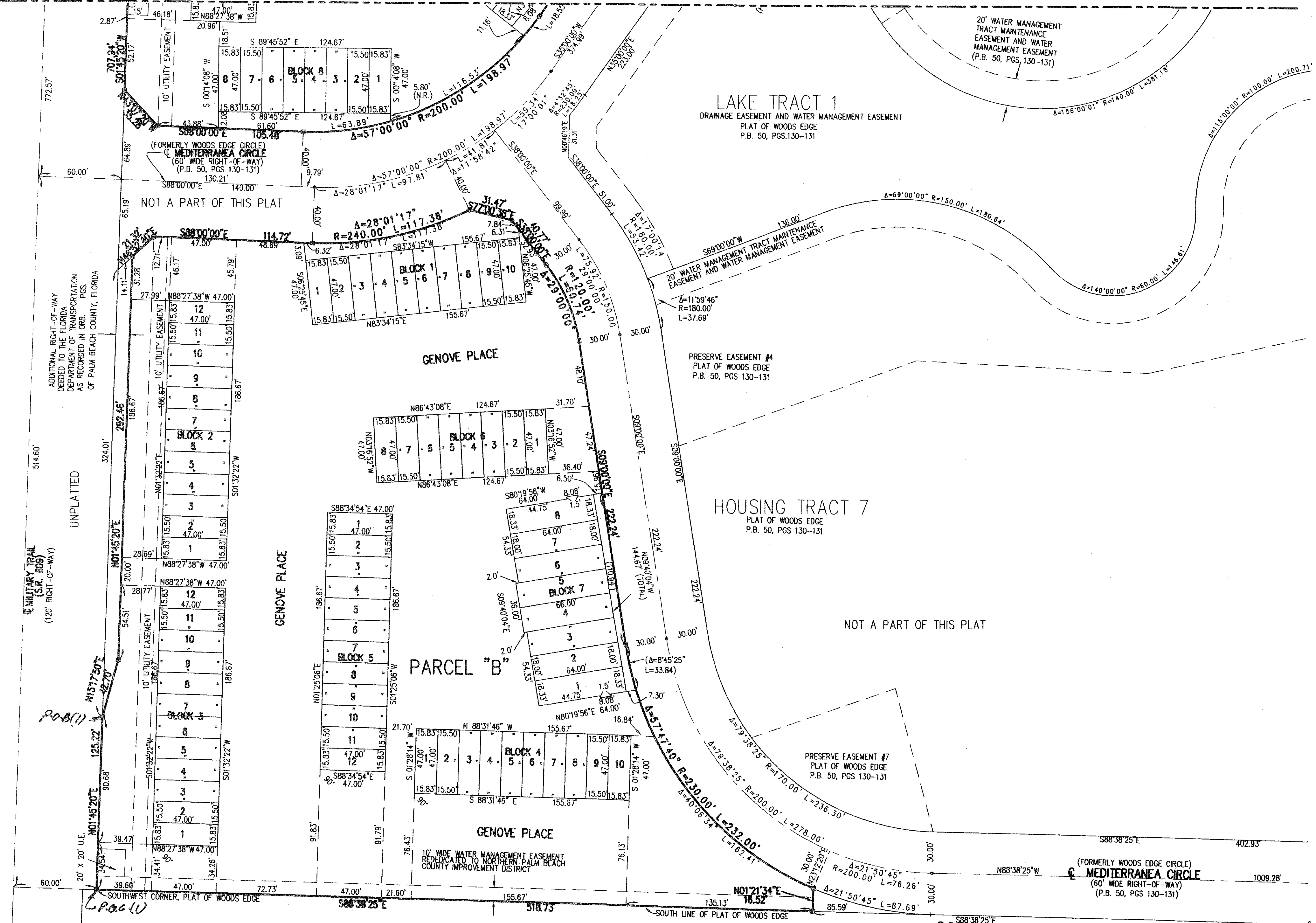


LEGEND

- R RADIUS
- L ARC LENGTH
- Δ DELTA ANGLE
- (M) MEASURED
- O.R.B. OFFICIAL RECORD BOOK
- P.O.B. POINT OF BEGINNING
- P.O.C. POINT OF COMMENCEMENT
- L.A.E. LIMITED ACCESS EASEMENT
- R.O.W. RIGHT-OF-WAY
- C.B. CHORD BEARING
- P.R.C. POINT OF REVERSE CURVATURE
- P.B. PLAT BOOK
- PG. PAGE
- U.E. UTILITY EASEMENT
- D.E. DRAINAGE EASEMENT
- ⊕ CENTER-LINE
- SET PERMANENT REFERENCE MONUMENT LB#6603
- N.R. NON-RADIAL



KEY SHEET
M.T.S.



Y:\land Projects\R2\016.02.03\mes\40160205.plt.dwg 10/20/2006 10:43:46 AM EST

N. P. B. C. I. D. CANAL EPB NO. 7
O.R.B. 1770, PGS 306-307
(70' WIDE R.O.W.)

MEDITERRANEA PHASE 1

SFRN
Engineers • Surveyors • Mappers
1201 BELVEDERE ROAD, WEST PALM BEACH, FLORIDA 33405
PH (561)855-1151 • FAX (561)852-9390 • WWW.SFRNINC.COM

DATE	10/07/2005
SCALE	1" = 40'
CAD FILE	4016.02.05
SIX PROJECT	4016.02.02
DRAWN	SFRN STAFF
CHECKED	G. RAYMAN

SHEET
E.O.T.
3/3
JOB NO.
04016.02.05